

# European Non-Wood Forest Products (NWFPs) Network COST Action FP1203



## 1<sup>st</sup> Workshop and 2<sup>nd</sup> Management Committee Meeting

Lisbon, Portugal  
20. - 21. June 2013

Local organizers: Margarida Tomé and Luis Fontes

**Location of the venue:**  
**Auditorium “Sala de Actos”**  
**Instituto Superior de Agronomia**

Tapada da Ajuda,  
1349-017 Lisboa,  
Portugal  
Phone: +351 213653367  
Mobile: +351 917426351  
[www.isa.utl.pt](http://www.isa.utl.pt)



## European NWFPs Network Programme

### Wednesday, June 19

Arrival of participants

#### Item 0: Steering Committee Meeting (SC members only)

18:00 - 19:30 SC Meeting (location of this meeting to be agreed by the SC)

### Thursday, June 20

08:30 - 09:00 Registration of participants

09:00 Meeting starts

09:00 - 09:10 Margarida Tomé & Luis Fontes, welcome by the local organizers & practical information

09:10 - 9:20 Luis Fontes & Jenny Wong - Introduction to the workshop

#### Item 1: Plenary session with key-note speakers (Moderator: Margarida Tomé)

09:20 - 9:40 "Opportunities and constraints for gathering data and statistics on NWFP" Paul Vantomme, FAO

9:40 - 10:00 "StarTree Project – Multipurpose trees and non-wood forest products a challenge and opportunity" Robert Mavsar, EFI

10:00 - 10:20 "Micosylva+ project: Mycosylviculture and valorization of wild edible mushrooms as guarantors of forest sustainability and multifunctionality" Fernando Martínez, CESEFOR

10:20 - 10:40 "Multipurpose trees in Zagori, NW Greece" Kalliopi Stara, University of Ioannina

10:40 - 11:00 Coffee break

11:00 - 11:20 "Game management in Portugal: an overview" João Carvalho, ANPC

#### Item 2: Working Group (WG) meetings (Moderators: WG Leaders)

11:20 - 11:40 Brief overview of WGs (WG Leaders)

11:40 - 13:00 Parallel Sessions coordinated by the Working group leaders

13:00 - 14:00 Lunch

#### Item 3: Task Force (TF) meetings (Moderators: TF Leaders)

14:00 - 14:20 Brief overview of TFs (TF Leaders)

14:20 - 16:00 Parallel Sessions coordinated by the TF leaders

16:00 - 16:20 Coffee break

#### Item 4: Field trip - Companhia das Lezírias (Host: Rui Alves)

16.20 – 17.20 Bus trip

17.20 – 19.45 Companhia das Lezírias

- Cork oak plantations (cork)
- Stone pine plantations (pine nuts)
- Game management

19:45 Dinner at Companhia das Lezírias

21.15 – 22.15 Bus trip back to Lisbon

Friday, June 21

**Item 5: Working Group (WG) proposals (Moderators: WG Leaders)**

09:00 - 10:00 Parallel Sessions coordinated by the Working group leaders

10:00 – 10:30 Plenary session WG Leaders feedback

---

10:30 - 10:50 Coffee break

**Item 6: Task Force (TF) proposals (Moderators: TF Leaders)**

10:50 - 11:50 Parallel Sessions coordinated by the Task force leaders

11:50 – 12:20 Plenary session TF Leaders feedback

12:20 - 12:40 General discussion of WG and TF proposals and co-ordination

**Item 8: End of the workshops**

12:40 - 13:00 Concluding remarks and next steps (Luis Fontes & Jenny Wong)

---

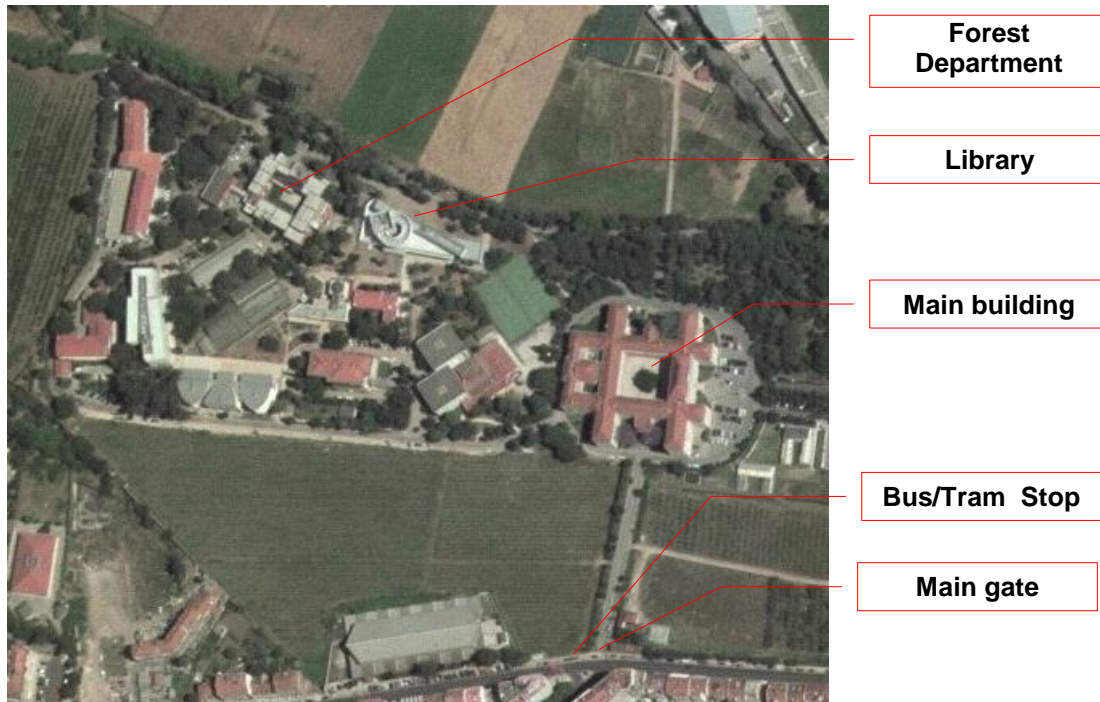
13:00 - 14:30 Lunch

**Item 9: Management Committee Meeting (MC members only)**

14:30 - 16:30 MC Meeting

Departure of participants

### Map from the local of venue



**The meeting will be held at the Main Building from Instituto Superior de Agronomia (“Sala de Actos” Auditorium)**

Tapada da Ajuda,

1349-017 Lisboa,

Portugal

Phone: +351 213653356

Mobile: +351 917426351

## Accommodation

For reservations, please contact the Hotel directly and confirm prices.

<b>LODGING</b>	
<p><u>Locate in a historical place:</u> <i>Belém</i> near <b>Instituto Superior de Agronomia (ISA)</b></p> <p>Transport to the <b>ISA</b>: Tram 15E and Bus 714, 727,732</p> <p>Map 1 (see below)</p>	<p><b>Pensão Setubalense</b> (Street) Belém 28</p> <p>1300 - 084 Lisboa Tel: (00351) 21 363 66 39 Fax: (00351) 21 363 09 90 <a href="http://www.pensaosetubalense.pt/">http://www.pensaosetubalense.pt/</a> price: xx€/night without wireless connection</p>
<p><u>Locate in City Center:</u> <i>Marques do Pombal</i></p> <p>Transport to the <b>ISA</b> Bus 720, 738, 732</p> <p>Map 2 (see below)</p>	<p><b>Hotel Ibis Liberdade***</b> (Street) Barata Salgueiro 53, 1250-043 Lisboa Tel: (00351)21 330 06 30 Fax: (00351)21 330 06 31 <a href="http://www.ibishotel.com">http://www.ibishotel.com</a> price: xx €/night</p>
<p><u>Locate in City Center:</u> <i>Praça de Espanha</i></p> <p>Transport to the <b>ISA</b>: Bus 56</p> <p>Map 3 (see below)</p>	<p><b>Hotel Ibis Lisboa Malhoa</b> (Avenue) José Malhoa, Lt. H 1070-158 - Lisboa Tel: (00351)21 723 57 00 Fax: (00351)21 723 57 01 <a href="http://www.ibishotel.com">http://www.ibishotel.com</a> price: xx €/night</p>
<p><u>Locate in City Center:</u> <i>Entrecampos</i> Local for the <b>venue</b> on 25<sup>th</sup> and 26<sup>th</sup></p> <p>Transport to the <b>ISA</b>: Bus 56</p> <p>Map 4 (see below)</p>	<p><b>Hotel Vip Zurique ***</b> R. Ivone Silva, nrº 18 1050-124 Lisboa Tel: (00351) 217814000 Fax: (00351) 217814101 <a href="http://www.viphotels.com">http://www.viphotels.com</a> <a href="mailto:hotelzurique@viphotels.com">hotelzurique@viphotels.com</a> price: xx €/night</p>
<p>If you prefer another Hotel accommodations and additional information, please consult the next websites <a href="http://www.hoteisdelisboa.com/">http://www.hoteisdelisboa.com/</a> <a href="http://www.atl-turismolisboa.pt">http://www.atl-turismolisboa.pt</a></p>	

## Public Transportation (all prices might have changed meanwhile)

### Aerobus or Taxi Voucher

The best way to get to the venue or to the hotel from the airport is by taxi; otherwise you should take the Aerobus to the city center (available between 7:40 and 20:45) and then the bus or tram to your destination.

### Taxi Voucher:

Service available to the passengers arriving at Lisboa Airport who wish to travel by taxi. The service operates with vouchers on sale at the Turismo de Lisboa counter, located in the Arrivals Hall. The price of the voucher depends on the distance of the trip and on the type of service required: normal or personalized. (Services Price: [http://www.atl-turismolisboa.pt/taxi\\_voucher.asp?tid=27&cid=107](http://www.atl-turismolisboa.pt/taxi_voucher.asp?tid=27&cid=107))

### Bus/Tram and Underground

The underground doesn't reach the area where the training will be held, although we will provide you some information about tickets and fares in case you decide to do some travelling on your own. There is one bus (bus 60) and one tram (Tram 18E) that stop at ISA's main gate. All other trams and buses that we suggest stop at "Calvário" where you can take bus 60 or tram 18E.



Bus and Tram on-board fare is 1.30 €. The cheaper alternative is to buy the tickets in advance. The "7 Colinas" card is a contact-free card on which multimodal tickets can be credited. The journeys can cover the Carris and underground networks. Several types of tickets can be credited on the "7 Colinas" card, which costs 0.50 € and can be reused.

### How does it work?

The "7 Colinas" card has to be held near a reader found on Carris buses and trams and at the underground. It is recommended, however, that the credit on the "7 Colinas" be used first, before adding new tickets to your card.

### Where can I buy and credit my "7 Colinas" card?

The "7 Colinas" card, including the tickets you wish to credit to it, is available at Carris ticket outlets and on the underground. You can credit your new tickets to your "7 Colinas" card at Carris ticket outlets, at the ticket office and the automatic ticket machines on the underground.

You can buy the bus/tram/metro tickets at the airport CTT/Pay-shop

### How can I see how much credit there is on my "7 Colinas" card?

Every time you use the Carris transport network, this information is supplied on the readers in the buses and trams.

**What options are available?**

At present, the “7 Colinas” card can be topped up with the following kinds of ticket:

**VALID FOR CARRIS AND THE UNDERGROUND:**

<b><u>Ticket Type</u></b>	<b><u>Ticket Price</u></b>
<b><u>Single Urban Ticket</u></b> <u>Allows you to use Carris (bus and tram) in the urban or suburban areas for an unlimited number of trips during 1h between the first and the last ticket reading.</u>	<u>1.15 €</u>
<b><u>Single Ticket for the Network</u></b> <u>Allows you to use Carris (bus and tram) network in for an unlimited number of trips during 1.30h. (limited to one trip on the underground).</u>	<u>1.50 €</u>
<b><u>One-Day Network Ticket</u></b> <u>Valid for an unlimited number of trips for the daily service of Carris (bus and tram) and Metro (underground) networks after the first reading.</u>	<u>3.35 €</u>
<b><u>Five-day Network Ticket</u></b> <u>Valid for an unlimited number of trips on Carris (bus and tram) and Metro (metro) networks during 5 consecutive days from the first reading.</u>	<u>13.50 €</u>

**VALID FOR CARRIS**

<b><u>Ticket Type</u></b>	<b><u>Ticket Price</u></b>
<b><u>Ticket for 1 zone (5 and 10 units)</u></b> <u>Each unit is valid in the urban suburban areas for an unlimited number of trips during 1h.</u>	<u>3.65 € (5 units)</u> <u>6.85 € (10 units)</u>